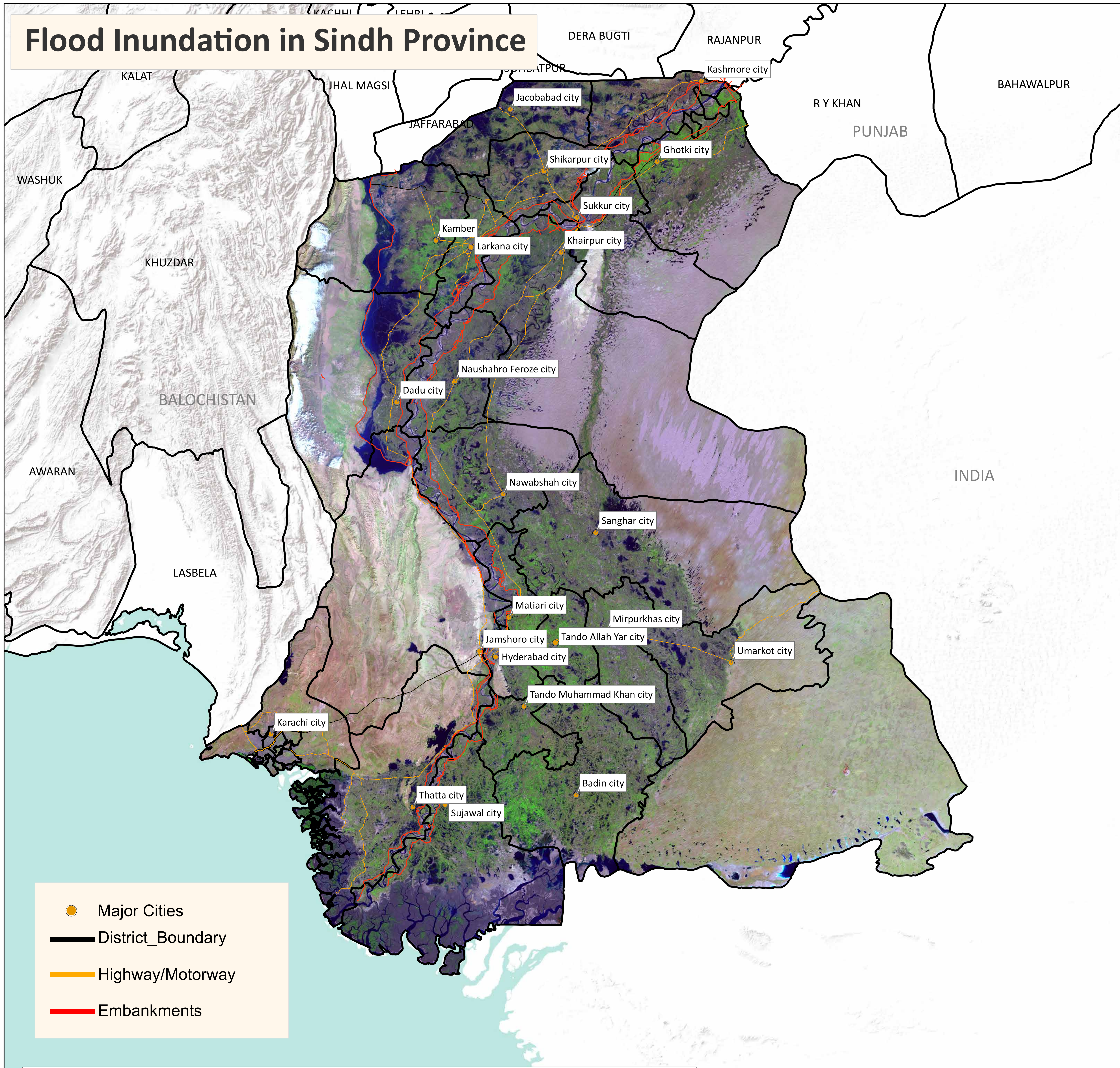
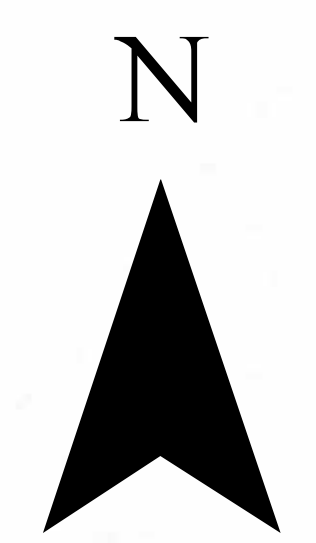


Flood Inundation in Sindh Province



- Major Cities
- District_Boundary
- Highway/Motorway
- Embankments

S.no	District	Total Area in Sq.Km	Previous Inundation in Sq.Km (01/11/2022)	Current Inundation in Sq.Km (17/11/2022)
1	Kashmore	2,549.03	409.63	380.09
2	Jacobabad	2,769.36	772.6	711.89
3	Shikarpur	2,576.89	487.81	437.18
4	Larkana	1,906.34	261.66	195.82
5	Kamber Shahdadkot	5,596.44	1,208.96	907.92
6	Dadu	8,032	1,209.57	1,077.20
7	Naushahro Feroze	3,025.48	404.38	359.7
8	SBA	4,615.16	404.68	347.43
9	Sanghar	10,259.02	690.12	633.67
10	Jamshoro	11,250.32	454.66	366.72
11	Hyderabad	1,021.54	88.44	76.46
12	Matiari	1,458.04	139.04	111.75
13	Tando Allah Yar	1,572.86	104.33	88.75
14	TMK	1,813	111.99	102.8
15	Badin	6,470	527.12	466.81
16	Sujawal	8,699.20	1,557.09	1,929.36
17	Thatta	7,704	1,011.53	952.74
18	Sukkur	5,212.05	255.56	203.38
19	Khairpur	15,925.04	624.97	553.03
20	Ghotki	6,506.18	224.78	219.27
21	Mirpurkhas	3,319.16	176.27	125.03
22	Umerkot	5,502.92	231.31	196.73
Total		117,784.49	11,356.50	10,443.73

Disclaimer: 15m resolution satellite Images has been used for preliminary damage assessment and depicts status of flood inundation as of image acquisition date.

Source: Landsat 8 Collection 2, 17 November 2022 5: 51

